

NEW DATA ON SPIDER FAUNA OF THE KATUNSKIY STATE NATURE BIOSPHERE RESERVE (ALTAI, RUSSIA), WITH DESCRIPTION OF THE MALE *OREONETIDES SAJANENSIS* ESKOV, 1991 (ARACHNIDA: ARANEAE)

Laimonas A. Trilikauskas, Andrei V. Tanasevitch

Trilikauskas L.A., Tanasevitch A.V. 2021. New data on spider fauna of the Katunskiy State Nature Biosphere Reserve (Altai, Russia), with description of the male *Oreonetides sajanensis* Eskov, 1991 (Arachnida: Araneae). *Acta Biol. Univ. Daugavp.*, 21 (2): 137 – 153.

A checklist of 76 spider species in 57 genera and 17 families from the Katunskiy State Nature Biosphere Reserve, Republic of Altai, Russia is provided, with 35 species representing new records to the reserve. Over 60% of the reserve's spider fauna are Holarctic, Palearctic or Palearctic-West Nearctic species; 19% are West-Palearctic and Euro-Siberian ones, and remaining 16% are purely Siberian and East Palearctic species. *Acantholycosa zinchenkoi* Marusik, Azarkina & Koponen, 2004 is reported from the fauna of Russia for the first time. A previously unknown male is described and illustrated for *Oreonetides sajanensis* Eskov, 1991. Taking into account the new data, the spider fauna of the Katunskiy Reserve currently consists of no less than 164 species.

Key words: highland biota, list of spiders, new records, unknown male, Katunskiy Mt. Ridge, South Siberia

Laimonas A. Trilikauskas. Institute of Systematics and Ecology of Animals, Siberian Branch Russian Academy of Sciences, Frunze Str. 11, Novosibirsk, 630091, Russia, E-mail: laimont@mail.ru

Laimonas A. Trilikauskas State Nature Reserve Tigirekski, Nikitina str. 111, Barnaul 656043, Russia.

Andrei V. Tanasevitch A.N. Severtsov Institute of Ecology and Evolution, Russian Academy of Sciences, Leninsky prospect 33, Moscow 119071, Russia, E-mail: tanasevitch@gmail.com

INTRODUCTION

The highland biota is always of great interest to researchers, and the spider fauna of the mountain Altai is no exception. Despite the presence of extensive published material on the Altai spiders (Marusik et al. 1996, Levina & Mikhailov 2004, Tanasevitch 2013) and numerous descriptions of individual taxa (Marusik et al. 2004, Marusik & Fomichev 2010, Tanasevitch 2014, etc.),

the spider fauna of this highland area cannot be considered well-studied. This holds true to faunas of the protected natural territories of the Altai, for example, the Katunskiy State Nature Biosphere Reserve. To date, only one paper specifically devoted to its araneofauna has been published (Trilikauskas 2019). Based on all the available literature data (see above, etc.), the spider fauna of the Katunskiy Reserve accounts for 129 species.

The aims of present paper are (1) to complement the available data on spiders of the Katunskiy Reserve, and (2) to describe the previously unknown male of *Oreonetides sajanensis* Eskov, 1991.

MATERIAL AND METHODS

This paper is based on the material collected by L.A. Trilikauskas in the Katunskiy Reserve in August 2019–2020, near Taimenye Lake and Zaichikha River mouth, situated in the upper reaches of the Katun' River. All the studied habitats are situated in the upper part of the forest belt and the subalpine belt of the Katunskiy Mt. Ridge. Spiders were collected by pitfall traps, sweeping, and sorting soil sampling. In total, 281 adult spider specimens were collected and studied. Specimens were preserved in 70% ethanol and then examined under a MBS-9 stereomicroscope. Digital images of preserved specimens were taken with a Canon EOS 550D attached to a Zeiss Stemi 2000-C stereomicroscope. Stacked images were combined using the Helicon Focus 6.3 software. Fig. 1 was produced using the online mapping software SimpleMapper (Shorthouse, 2010).

In the description, the sequence of leg segment measurements is as follows: femur + patella + tibia + metatarsus + tarsus. All measurements are given in mm. Scale lines in the figures correspond to 0.1 mm unless stated otherwise. Figure numbers are given above the corresponding scale lines, the length they represent is given underneath them. The terminology of copulatory organs mainly follows that of Merrett (1963) and that of authors mentioned in the Abbreviations below.

The specimens studied in the present paper have been deposited in the following collections: Institute of Systematics and Ecology of Animals, Novosibirsk, Russia, curator G.N. Azarkina (ISEA); the personal collection of L.A. Trilikauskas (PCLT), and the Zoological Museum of the Moscow State University, Moscow, Russia, curator K.G. Mikhailov (ZMMU).

The species recorded from the Katunskiy Reserve for the first time are asterisked (*); new for the Russian fauna is double asterisked (**).

The distribution range for each species is given based on records taken mostly from the World



Fig. 1. Black spot – location of the Katunskiy State Nature Biosphere Reserve.

Spider Catalog (2021) with generalizations, including some corrections and additions. A distribution given for *Pardosa lugubris* (Walckenaer, 1802) is based on the personal data by L.A. Trilikauskas.

Abbreviations used in the text and figures

a.s.l. - above sea level

E - embolus

env. - environs

EP - embolus proper *sensu* Saaristo (1971)

KBR - Katunskiy State Nature Biosphere Reserve

LC - lamella characteristic *sensu* Kulczyński (1898)

LE - lateral extension of embolus

LT - Laimonas A. Trilikauskas

MM - median membrane *sensu* Helsdingen (1965)

PH - pit-hook *sensu* Saaristo (1973)

Pt - prottegulum *sensu* Holm (1979)

R - radix

TmI - position of trichobothrium on metatarsus I

List of spiders of the Katunskiy State Nature Biosphere Reserve

Family Araneidae (5 species)

Aculepeira ceropegia (Walckenaer, 1802)*

Material. 2♀ (ISEA), KBR, bank of Taimenye Lake near Soloukha River mouth, 49°50.194'N 85°51.128'E, 1534 m a.s.l., 09.VIII.2019, leg. LT.

Habitats. Herb meadows.

Range. West Palaearctic.

Araneus diadematus (Linnaeus, 1757)*

Material. 2♀ (ISEA), KBR, Ozernaya River head, env. of Taimenye Lake, middle reaches of Kharyuzovka River, 49°48'53.6"N 85°47'42.0"E, 1652–1660 m a.s.l., 07.VIII.2019, leg. LT; 1♂ & 2♀ (ISEA), same locality, E-slope near Taimenye Lake, env. of Taimenye Lake Ranger Station, 49°48'40.9–42.9"N 85°47'57.2–57.6"E, 1509 m a.s.l., 08–09.VIII.2019, leg. LT; 1♂ & 2♀ (ISEA), KBR, Zaichikha River Valley, 1.5 km upstream of river mouth, 17.VIII.2020, leg. LT.

Habitats. Grass in river floodplains, herb meadows and clearings in subalpine dark coniferous forests.

Range. Palaearctic, introduced to North America.

Araneus marmoreus Clerck, 1757

Araneus marmoreus Levina & Mikhailov, 2004: 41.

Material. 2♀ (ISEA), KBR, env. of Taimenye Lake, bank of Khariuzovka River, 07–11.VIII.2019, leg. LT; 2♀ (ISEA), same locality, near Soloukha River mouth, 49°50.194'N 85°51.128'E, 09.VIII.2019, leg. LT; 1♀ (ISEA), same locality, E-slope near Taimenye Lake, env. of Taimenye Lake Ranger Station, 49°48'40.9–42.9"N 85°47'57.2–57.6"E, 1509 m a.s.l., 10.VIII.2019, leg. LT; 1♂ & 2♀ (ISEA), KBR, Katun River Valley near Zaichikha River mouth, 49°37'08.3"N 85°43'03.8"E, 1302 m a.s.l., 14–18.VIII.2020, leg. LT; 2♀ (ISEA), KBR, 4 km NE of Zaichikha Ranger Station, 49°36'25.6"N 85°44'13.4"E, 16.VIII.2020, leg. LT; 1♀ (ISEA), KBR, Zaichikha River Valley, 49°36.872'N 85°43.485'E, 1334 m a.s.l., 17.VIII.2020, leg. LT.

Habitats. Grass in river floodplains, herb meadows, grass in forest edges, sparse spruce underwood, fir forests, edge of scree, on village residential and outbuildings

Range. Holarctic.

Araneus quadratus Clerck, 1757

Araneus quadratus Levina & Mikhailov, 2004: 41.

Material. 1♂ & 3♀ (ISEA), KBR, bank of Taimenye Lake, near Soloukha River mouth, 49°50.194'N 85°51.128'E, 1534 m a.s.l., 09.VIII.2019, leg. LT; 2♀ (ISEA), KBR, Zaichikha River Valley, 49°36.872'N 85°43.485'E, 1334 m a.s.l., 17.VIII.2020, leg. LT; 2♀ (ISEA), KBR, Katun River Valley, near Zaichikha River mouth, 49°37'08.3"N 85°43'03.8"E, 1302 m a.s.l., 14–18.VIII.2020, leg. LT; 1♀ (ISEA), KBR, floodplain of small river, 160 m upstream of Zaichikha River, 49.618615N 85.717350E, 20.VIII.2020, leg. LT; 1♀ (ISEA), KBR, Katun

River Valley, 1 km E of Zaichikha River mouth, 49.618664N 85.718200E, 21.VIII.2020, leg. LT.

Habitats. Herb meadows, sparse spruce underwoods, grass on pebble riverbanks, herb meadows.

Range. Palaearctic.

Larinioides patagiatus (Clerck, 1757)

Larinioides patagiatus Trilikauskas, 2019: 286.

Material. 1♂ & 3♀ (ISEA), KBR, Ozernaya headwaters, env. of Taimenye Lake, middle reaches of Kharyuzovka River, 49°48'53.6"N 85°47'42.0"E, 1652–1660 m a.s.l., 07–11.VIII.2019, leg. LT; 1♀ (ISEA), KBR, bank of Taimenye Lake, near Soloukha River mouth, 49°50.194'N 85°51.128'E, 1534 m a.s.l., 09.VIII.2019, leg. LT; 1♀ (ISEA), KBR, E-slope near Taimenye Lake, env. of Taimenye Lake Ranger Station, 49°48'40.9–42.9"N 85°47'57.2–57.6"E, 1509 m a.s.l., 10.VIII.2019, leg. LT; 1♂ & 1♀ (ISEA), KBR, Zaichikha Ranger Station near Zaichikha River mouth, 15–18.VIII.2020, leg. LT.

Habitats. Grass in river floodplains, herb meadows, edge of a mixed forests, on village residential and outbuildings.

Range. Holarctic.

Cheiracanthiidae (1 species)

Cheiracanthium erraticum (Walckenaer, 1802)

Cheiracanthium erraticum Trilikauskas, 2019: 286.

Material. 1♀ (ISEA), KBR, upper reaches of Katun River, Zaichikha River Valley, 49°36.872'N 85°43.485'E, 1334 m a.s.l., 16.VIII.2020, leg. LT.

Habitats. Herb meadows, sparse spruce underwoods in grass.

Range. Palaearctic.

Clubionidae (3 species)

Clubiona kulczynskii Lessert, 1905

Clubiona kulczynskii Levina & Mikhailov, 2004: 42.

Material. 1♂ (ISEA), KBR, E-slope near Taimenye Lake, env. of Taimenye Lake Ranger Station, 49°48'40.9–42.9"N 85°47'57.2–57.6"E, 1509 m a.s.l., 10.VIII.2019, leg. LT; 1♀ (ISEA), KBR, Katun River Valley, 3.5 km upstream of Zaichikha River mouth, 49.614980N 85.717212E, 24.VIII.2020, leg. LT.

Habitats. Edge of a mixed forests in grass, spruce-poplar forests.

Range. Holarctic.

Clubiona reclusa O. Pickard-Cambridge, 1863*

Material. 1♂ & 1♀ (ISEA), KBR, env. of Taimenye Lake, floodplain of Khariuzovka River, 49°48'53.6"N 85°47'42.0"E, 1652 m a.s.l., 11.VIII.2019, leg. LT; 1♀ (ISEA), KBR, Katun River Valley, 160 m upstream of Zaichikha River mouth, 49.618615N 85.717350E, 20.VIII.2020, leg. LT.

Habitats. Dry riverbed on small islands, among plant residues, sedge swamps and floodplains.

Range. West Palaearctic.

Clubiona subsultans Thorell, 1875

Clubiona subsultans Trilikauskas, 2019: 286.

Material. 1♂ (ISEA), KBR, SE shore of Taimenye Lake, 49°48'08.2"N 85°48'00.5"E, 1551 m a.s.l., 07–13.VIII, leg. LT.

Habitats. Blueberry-green moss spruce forests.

Range. Palaearctic.

Dictynidae (1 species)

Dictyna arundinacea (Linnaeus, 1758)

Dictyna arundinacea Levina & Mikhailov, 2004: 42.

Material. 1♀ (ISEA), KBR, Katun River Valley, 1 km E of Zaichikha River mouth, 49.618664N 85.718200E, 21.VIII.2020, leg. LT.

Habitats. Herb meadows.

Range. Holarctic.

Gnaphosidae (5 species)

***Drassodes cupreus* (Blackwall, 1834)**

***Drassodes cupreus* Levina & Mikhailov, 2004: 42.**

***Drassodes cupreus* Trilikauskas, 2019: 286.**

Material. 1♀ (ISEA), KBR, NW shore of Taimenye Lake, 49°49'35.9"N 85°48'25.5"E, 1745–1760 m a.s.l., 08.VIII.2019, leg. LT.

Habitats. Screes.

Range. Palaearctic.

Drassodes pubescens* (Thorell, 1856)

Material. 2♀ (ISEA), KBR, floodplain of small river, 260 m upstream of Zaichikha River mouth, 20.VIII.2020, leg. LT.

Habitats. Pebble river banks.

Range. Palaearctic.

Micaria alpina* L. Koch, 1872

Material. 1♀ (ISEA), KBR, bank of Taimenye Lake near Soloukha River mouth, 49°50.194'N 85°51.128'E, 1534 m a.s.l., 09.VIII.2019, leg. LT.

Habitats. Herb meadows.

Range. Holarctic.

Micaria nivosa* L. Koch, 1855

Material. 1♀ (ISEA), KBR, floodplain of small river 260 m upstream of Zaichikha River, 20.VIII.2020, leg. LT.

Habitats. Pebble river banks, under stones.

Range. West Palaearctic.

Zelotes petrensis* (C. L. Koch, 1839)

Material. 1♂ (ISEA), KBR, upper reaches of Katun' River Valley near Zaichikha River mouth, 1302 m a.s.l., 49°37.138'N 85°43.064'E, 15–26.VIII.2020, leg. LT.

Habitats. Spruce green moss forests.

Range. West Palaearctic.

Linyphiidae (32 species)

Allomengea scopigera* (Grube, 1859)

Material. 4♂ & 11♀ (ISEA), KBR, env. of Taimenye Lake floodplain of Khariuzovka River, 49°48'53.6"N 85°47'42.0"E, 1652 m a.s.l., 11.VIII.2019, leg. LT; 1♂ (ISEA), KBR, upper reaches of Katun' River Valley, near Zaichikha River mouth, 1302 m a.s.l., 49°37.138'N 85°43.064'E, 17.VIII.2020, leg. LT; 1♀ (ISEA), KBR, Katun' River Valley, 3.5 km upstream of Zaichikha River mouth, 49.614980N 85.717212E, 24.VIII.2020, leg. LT; 1♂ & 1♀ (ISEA), KBR, upper reaches of Katun' River Valley, Zaichikha River Valley 800 m upstream of its mouth, 49.619266N 85.718446E, 15–26.VIII.2020, leg. LT; 1♂ (ISEA), KBR, same locality, near Zaichikha River mouth, 16–26.VIII.2020, leg. LT.

Habitats. Dry riverbeds on small islands, among plant residues, green moss tall herb spruce forest, spruce-poplar forests.

Range. Palaearctic-West Nearctic.

***Anguliphantes sibiricus* (Tanasevitch, 1986)**

***Anguliphantes sibiricus* Trilikauskas, 2019: 287.**

Material. 1♀ (ISEA), KBR, env. of Taimenye Lake, floodplain of Khariuzovka River, 49°48'53.6"N 85°47'42.0"E, 1652 m a.s.l., 11.VIII.2019, leg. LT; 1♀ (ISEA), KBR, upper reaches of Katun' River Valley, Zaichikha River Valley, 1 km upstream of its mouth, 49.619488N 85.717588E, 18.VIII.2020, leg. LT.

Habitats. Dry riverbeds on small islands, among plant residues, green moss spruce forests.

Range. West & South Siberian.

***Bathyphantes eumenis* (L. Koch, 1879)**

***Bathyphantes eumenis* Levina & Mikhailov, 2004: 44.**

Material. 1♀ (ISEA), KBR, upper reaches of Katun' River Valley, floodplain of Zaichikha River, 100–150 m upstream of its mouth, 05.VIII.2020, leg. LT; 2♀ upper reaches of Katun'

River, near Zaichikha River mouth, 49°37.138'N 85°43.064'E, 1302 m a.s.l., 17.VIII.2020, leg. LT; 1♀ (ISEA), KBR, same locality, 3.5 km upstream of Zaichikha River mouth, 49.614980N 85.717212E, 24.VIII.2020, leg. LT.

Habitats. Pebble riverbanks among plant residues, spruce green moss forests, spruce-poplar forests.

Range. Holarctic.

Bolyphantes alticeps* (Sundevall, 1833)

Material. 1♀ (ISEA), KBR, NE shore of Taimenye Lake, 49.811683N 85.799368E, 10.VIII.2019, leg. LT; 2♂ 5♀ (ISEA), KBR, bank of Taimenye Lake near Soloukha River mouth, 49°50.194'N 85°51.128'E, 1534 m a.s.l., 09.VIII.2019, leg. LT; 1♂ (ISEA), KBR, E-slope of mountain near Taimenye Lake Ranger Station, 10.VIII.2019, leg. LT; 1♂ (ISEA), KBR, upper reaches of Katun' River, Zaichikha River mouth, 49°37.138'N 85°43.064'E, 1302 m a.s.l., 19.VIII.2020, leg. LT.

Habitats. Alluvions along lake shores, herb meadows, among stones in stream beds, edge of mixed and spruce forests.

Range. Palaearctic.

***Bolyphantes distichus* (Tanasevitch, 1986)**

***Bolyphantes distichus* Trilikauskas, 2019: 287.**

Material. 1♀ (ISEA), KBR, bank of Taimenye Lake near Soloukha River mouth, 49°50.194'N 85°51.128'E, 1534 m a.s.l., 09.VIII.2019, leg. LT; 1♀ (ISEA), KBR, right bank of Kharyuzovka River, 49.810694N 85.796680E, 09.VIII.2019, leg. LT; 1♂ (ISEA), KBR, E-slope of mountain near Taimenye Lake Ranger Station, 10.VIII.2019, leg. LT; 4♀ (ISEA), KBR, env. of Taimenye Lake, floodplain of Kharyuzovka River, 49°48'53.6"N 85°47'42.0"E, 1652 m a.s.l., 11.VIII.2019, leg. LT.

Habitats. Among stones in stream beds, in grass of sparse dark coniferous forests, dry riverbeds on small islands, among plant residues.

Range. South Siberian.

***Centromerus clarus* (L. Koch, 1879)**

***Centromerus clarus* Levina & Mikhailov, 2004: 44.**

***Centromerus clarus* Trilikauskas, 2019: 287.**

Material. 1♀ (ISEA), KBR, 3 km NE of Zaichikha Ranger Station, 49°36'25.6"N 85°44'13.4"E, 16.VIII.2020, leg. LT; 1♀ (ISEA), KBR, Katun' River Valley, 1 km E of Zaichikha River mouth, 49.618664N 85.718200E, 17.VIII.2020, leg. LT; 1♀ (ISEA), KBR, upper reaches of Katun' River, near Zaichikha River mouth, 49°37.138'N 85°43.064'E, 1302 m a.s.l., 17.VIII.2020, leg. LT; 1♀ (ISEA), KBR, upper reaches of Katun' River Valley, Zaichikha River Valley, 1 km upstream of its mouth, 49.619488N 85.717588E, 18.VIII.2020, leg. LT; 1♀ (ISEA), KBR, Katun' River Valley, 150 m upstream of Zaichikha mouth, 20.VIII.2020, leg. LT; 2♀ (ISEA), KBR, same locality, 3.5 km upstream of Zaichikha River mouth, 49.614980N 85.717212E, 24.VIII.2020, leg. LT.

Habitats. *Abies sibirica* green moss forests, herb meadows, green moss spruce forests, spruce-poplar and *Larix-Picea* forests.

Range. Siberian.

***Dicymbium nigrum* (Blackwall, 1841)**

***Dicymbium nigrum* Levina & Mikhailov, 2004: 44.**

Material. 1♂ (ISEA), KBR, upper reaches of Katun' River Valley, downstream of Zaichikha River, 500 m E of its mouth, 19.VIII.2020, leg. LT.

Habitats. Tall herb spruce forests.

Range. West Palaearctic.

Drapetisca socialis* (Sundevall, 1833)

Material. 1♀ (ISEA), KBR, upper reaches of Katun' River, Zaichikha River mouth, 49°37.138'N 85°43.064'E, 1302 m a.s.l., near Zaichikha Ranger Station, 17.VIII.2020, leg. LT.

Habitats. Green moss spruce forests.

Range. Palaearctic.

Erigone cristatopalpus* Simon, 1884

Material. 1♀ (ISEA), KBR, env. of Taimenye Lake, floodplain of Kharyuzovka River, 49°48'53.6"N 85°47'42.0"E, 1652 m a.s.l., 11.VIII.2019, leg. LT.

Habitats. Dry riverbeds on a small islands, among plant residues.

Range. Holarctic.

Flagelliphantes bergstroemi* (Schenkel, 1931)

Material. 1♂ (ISEA), KBR, upper reaches of Katun' River Valley, downstream of Zaichikha River, 500 m E of its mouth, 19.VIII.2020, leg. LT; 1♀ (ISEA), same locality, Zaichikha River Valley, 1 km upstream of its mouth, 49.619488N 85.717588E, 20.VIII.2020, leg. LT.

Habitats. Tall herb spruce forests.

Range. Fennoscandian-Siberian.

Helophora insignis* (Blackwall, 1841)

Material. 1♂ & 2♀ (ISEA), KBR, upper reaches of Katun' River, 3 km NE of Zaichikha Ranger Station, 49°36'25.6"N 85°44'13.4"E, 16.VIII.2020, leg. LT.

Habitats. *Abies sibirica* green moss forests.

Range. Holarctic.

***Hilaira herniosa* (Thorell, 1875)**

***Hilaira herniosa* Levina & Mikhailov, 2004: 45.**

***Hilaira herniosa* Trilikauskas, 2019: 287.**

Material. 1♂ & 8♀ (ISEA), KBR, upper reaches of Katun' River, near Zaichikha River mouth, 49°37'138"N 85°43'064"E, 1302 m a.s.l., 16–26.VIII.2020, leg. LT; 5♂ & 5♀ (ISEA), KBR, upper reaches of Katun' River Valley, Zaichikha River Valley, 1 km upstream of its mouth, 49.619488N 85.717588E, 18,20.VIII.2020, leg. LT; 3♂ & 10♀ (ISEA), KBR, upper reaches of Katun' River Valley, downstream of Zaichikha River, 500 m E of its mouth, 15–26.VIII.2020, leg. LT; 3♀ (ISEA), KBR, same locality, 3.5 km upstream of Zaichikha River mouth, 49.614980N 85.717212E, 24.VIII.2020, leg. LT.

Habitats. Green moss spruce forests, tall herb spruce forests, spruce-poplar forests.

Range. Holarctic

***Hypomma bituberculatum* (Wider, 1834)**

***Hypomma bituberculatum* Levina & Mikhailov, 2004: 45.**

Material. 1♀ (ISEA), KBR, env. of Taimenye Lake, floodplain of Kharyuzovka River, 49°48'53.6"N 85°47'42.0"E, 1652 m a.s.l., 11.VIII.2019, leg. LT.

Habitats. Dry riverbeds on small islands, among plant residues.

Range. Palaearctic.

***Lasiargus hirsutus* (Menge, 1869)**

***Lasiargus hirsutus* Levina & Mikhailov, 2004: 45.**

Material. 1♀ (ISEA), KBR, E-slope of mountain near Taimenye Lake Ranger Station, 49.812513N 85.797308E, 10.VIII.2019, leg. LT; 1♀ (ISEA), KBR, 3 km NE of Zaichikha Ranger Station, 49°36'25.6"N 85°44'13.4"E, 16.VIII.2020, leg. LT.

Habitats. Mixed forest edges, screes.

Range. Palaearctic.

***Lepthyphantes luteipes* (L. Koch, 1879)**

***Lepthyphantes luteipes* Trilikauskas, 2019: 287.**

Material. 1♀ (ISEA), KBR, SE shore of Taimenye Lake, 49°48'08.2"N 85°48'00.5"E, 1551 m a.s.l., 07–13.VIII.2019, leg. LT.

Habitats. Blueberry-green moss spruce forests.

Range. East Palaearctic.

***Leptorhoptrum robustum* (Westring, 1851)**

***Leptorhoptrum robustum* Levina & Mikhailov, 2004: 45.**

***Leptorhoptrum robustum* Trilikauskas, 2019: 287.**

Material. 1♂ & 3♀ (ISEA), KBR, env. of Taimenye Lake, floodplain of Kharyuzovka River, 49°48'53.6"N 85°47'42.0"E, 1652 m a.s.l., 11.VIII.2019, leg. LT; 1♀ (ISEA), KBR, upper reaches of Katun' River Valley, floodplain of Zaichikha River, 100–150 m upstream of its mouth, 15.VIII.2020, leg. LT.

Habitats. Dry riverbeds on small islands and pebble river banks in litter.

Range. Palaearctic-West Nearctic.

Macrargus multesimus (O. Pickard-Cambridge, 1875)

Macrargus multesimus Levina & Mikhailov, 2004: 45.

Material. 2♂ (ISEA), KBR, upper reaches of Katun' River, 3 km NE of Zaichikha Ranger Station, 49°36'25.6"N 85°44'13.4"E, 16.VIII.2020, leg. LT.

Habitats. *Abies sibirica* green moss forests.

Range. Holarctic.

Maro sibiricus Eskov, 1980*

Material. 1♀ (ISEA), KBR, upper reaches of Katun' River Valley, downstream of Zaichikha River, 500 m E of its mouth, 19.VIII.2020, leg. LT.

Habitats. Green moss spruce forests.

Range. Siberian.

Oedothorax gibbosus (Blackwall, 1841)*

Material. 2♀ (ISEA), KBR, upper reaches of Katun' River, floodplain of small river 160 m upstream of Zaichikha River, 20.VIII.2020, leg. LT.

Habitats. Pebble riverbanks.

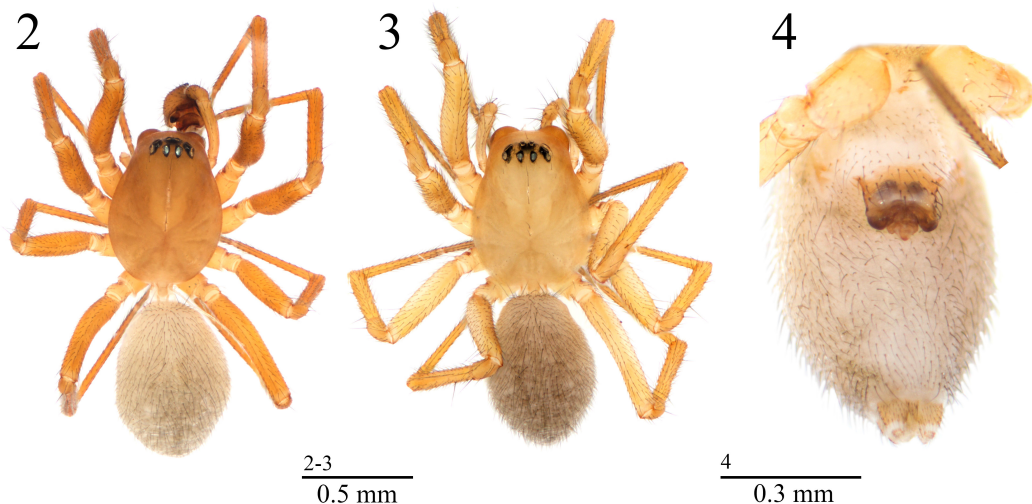
Range. West Palaearctic.

Oreoneta eskovi Saaristo & Marusik, 2004*

Material. 1♀ (ISEA), KBR, upper reaches of Katun' River Valley, Zaichikha River Valley, 1 km upstream of its mouth, 49.619488N 85.717588E, 18.VIII.2020, leg. LT; 1♂ (ISEA), KBR, upper reaches of Katun' River Valley, downstream of Zaichikha River, 500 m E of its mouth, 19.VIII.2020, leg. LT; 1♂ (ISEA), KBR, same locality, 3.5 km upstream of Zaichikha River mouth, 49.614980N 85.717212E, 24.VIII.2020, leg. LT.

Habitats. Tall herb spruce forests, spruce-poplar forests.

Range. Central & South Siberian.



Figs 2–4. Images of *Oreonetides sajanensis* Eskov, 1991: 1–2 – habitus of male and female, respectively; 3 – abdomen of female, ventral view.

Oreonetides sajanensis* Eskov, 1991

Figs 2–9

***Oreonetides sajanensis*. – Eskov, 1991, 70 (4): 50, female, examined.**

***O. sajanensis*. – Logunov *et al.*, 1998, 85: 136, female.**

***O. sajanensis*. – Marusik *et al.*: 2000, 61, reference.**

***O. sajanensis*. – Levina & Mikhailov, 2004, 109 (3): 46, female, examined.**

***O. sajanensis*. – Tanasevitch, 2008, 16 (2): 126, female, examined.**

Remarks. The species was described from a single female from the Kulumys Mt. Ridge, Western Sayan, Krasnoyarsk Area, E Russia (Eskov, 1991). Later, females of *O. sajanensis* were recorded from Oiski Mt. Ridge, Western Sayan, Tuva, E Russia (Logunov *et al.*, 1998; Marusik *et al.*, 2000), Baltyrgan Mt., Altai (Levina & Mikhailov, 2004), and Kuznetski Alatau Mts, Khakassia, E Russia (Tanasevitch, 2008). The species appears rare and is only known from mountains of southern Siberia.

Material examined. 1♂ & 1♀ (ISEA), RUSSIA: Republic of Altai, Altai Mts, KBR, upper reaches of Katun' River Valley, Zaichikha River Valley, 1 km upstream of its mouth, 49.619488N 85.717588E, 20.VIII.2020, leg. LT; 1♂ (ZMMU), Altai Mts, Listvyaga Mt. Ridge, Tesninski Belok Mt., 2000–2300 m a.s.l., alpine belt, 28.VII.1997, R. Dudko & V. Zinchenko leg.; 1♀ (ZMMU), Altai Mts, 8 km S Ust'-Kan, upper reaches of Aksas River, 1900–2000 m a.s.l., subalpine and mountain tundra, 8–9.VI.1999, A. Dudko & R. Dudko leg.

Description. Male from Mt. Tesninski Belok. Total body length 3.35. Carapace 1.50 long, 1.10 wide, unmodified, reddish-brown (Fig. 2). Chelicerae 0.60 long, a mastidion (frontal tooth) absent. Legs pale reddish-brown. Leg I, 4.85 long (1.35 + 0.40 + 1.20 + 1.10 + 0.80), IV, 5.15 long (1.40 + 0.40 + 1.30 + 1.25 + 0.80). All tibiae with 2 dorsal spines, in addition, tibiae I

with a prolateral spine. Metatarsi spineless. Mt I-III with a trichobothrium. TmI – 0.34. Palp (Figs 5–9): Tibia unmodified. Cymbium without posterodorsal outgrowth(s). Paracymbium U-shaped, a posterior pocket large, triangular, apical pocket bifid. Tegulum with a distinct protegulum. Distal suprategular apophysis claw-shaped distally. Pit-hook with a pale pointed outgrowth ventrally. Median membrane relatively small. Radix well-sclerotized, Fickert's gland absent. Terminal apophysis completely reduced. Upper branch of lamella characteristic large and wide, low branch much smaller, conical. Embolus complex, with a narrow stem, distal part of embolus expanded, lateral extensions present. Embolus proper relatively long, bifid. Abdomen 1.90 long, 1.15 wide, pale grey (Fig. 2).

Female (Figs 3, 4). Well-described by Eskov (1991).

Taxonomic remarks. This species seems to be particularly similar to the East Siberian hypoarcto-boreal *O. kolyimensis* Eskov, 1991. The male differs by the shape of the paracymbium (Figs 6, 7 cf. Eskov, 1991, Fig. 1) and the structure of the embolic division, namely by the shape of the lamella characteristic and the embolus (Fig. 9 cf. Eskov, 1991: Fig. 2). The female is distinguishable by the shorter epigyne and the well-expressed, dark lateral walls (Fig. 4 cf. Eskov, 1991, Figs 3, 4).

Distribution. The species appears rare and is known from mountains of southern Siberia only.

Habitats. Green moss spruce forests.

Range. South Siberian.

***Oryphantes geminus* (Tanasevitch, 1982)**

Material. 1♀ (ISEA), KBR, upper reaches of Katun' River, Zaichikha River mouth, 49°37.138'N 85°43.064'E, 1302 m a.s.l., near Zaichikha Ranger Station, 15–18.VIII.2020, leg. LT.

Habitats. Around village residential and outbuildings, from ground.

Range. West & South Siberian.

Pocadicnemis pumila* (Blackwall, 1841)

Material. 1♀ (ISEA), KBR, upper reaches of Katun' River, Zaichikha River mouth, 49°37.138'N 85°43.064'E, 1302 m a.s.l., near Zaichikha Ranger Station, 15–18.VIII.2020, leg. LT.

Habitats. Around village residential and outbuildings, from ground.

Range. Holarctic.

River, 500 m E of its mouth, 19.VIII.2020, leg. LT.

Habitats. Tall herb spruce forests.

Range. Palaearctic-West Nearctic.

Porrhomma pallidum* Jackson, 1913

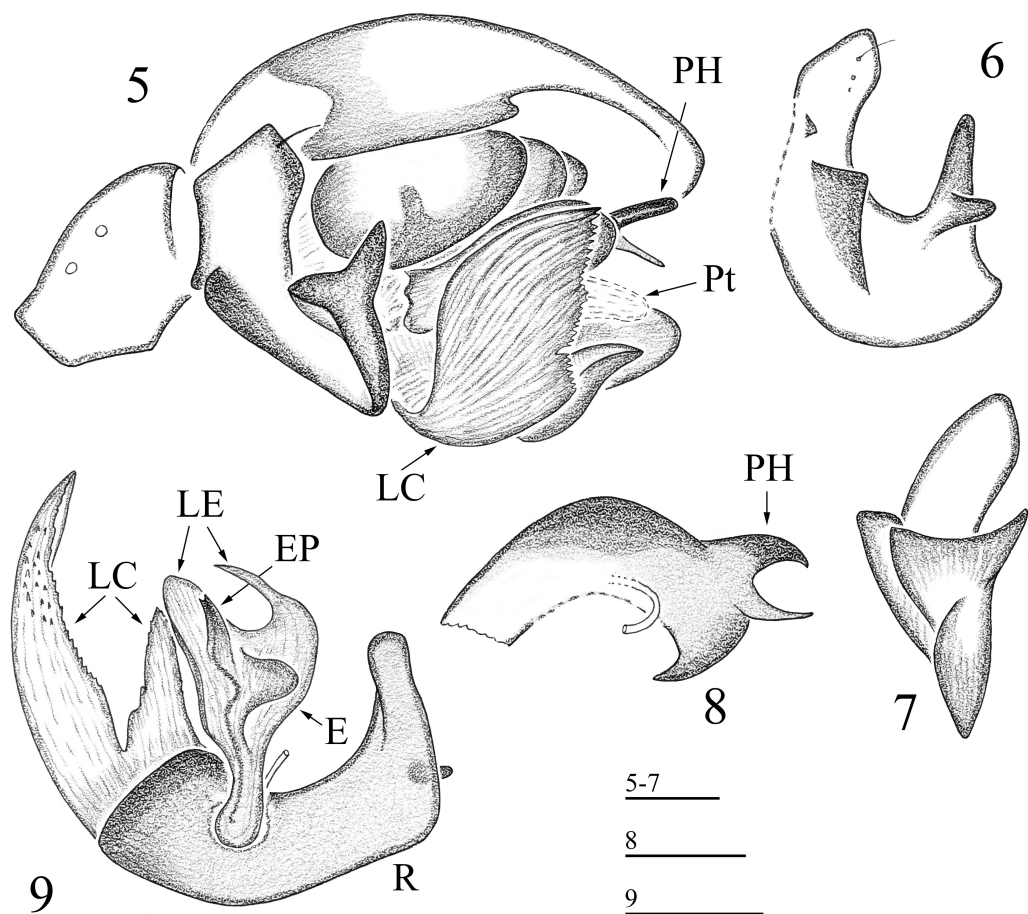
Material. 2♀ (ISEA), KBR, Katun' River Valley, 260 m upstream of Zaichikha River mouth, 49.618615N 85.717350E, 20.VIII.2020, leg. LT.

Habitats. Sedge swamps.

Range. Palaearctic.

Poeciloneta variegata* (Blackwall, 1841)

Material. 1♀ (ISEA), KBR, upper reaches of Katun' River Valley, downstream of Zaichikha



Figs 5–9. Details of the right palp of the male *Oreonetides sajanensis* Eskov, 1991: 5 – right palp, retrolateral view; 6–7 paracymbium, retrolateral and frontal views, respectively; 8 – distal suprategular apophysis, lateral view; 9 – embolic division, ventro-lateral view.

Stemonyphantes conspersus* (L. Koch, 1879)

Material. 1♀, (ISEA), KBR, upper reaches of Katun' River, Zaichikha River mouth, 49°37.138'N 85°43.064'E, 1302 m a.s.l., near Zaichikha Ranger Station, 15–18.VIII.2020, leg. LT.

Habitats. Near village residential and outbuildings.

Range. West & South Siberian.

Tenuiphantes alacris* (Blackwall, 1853)

Material. 1♂ & 1♀ (ISEA), KBR, upper reaches of Katun' River, Zaichikha River mouth, 49°37.138'N 85°43.064'E, 1302 m a.s.l., near Zaichikha Ranger Station, 17.VIII.2020, leg. LT.

Habitats. Spruce green moss forests.

Range. European-Siberian.

***Tenuiphantes mengei* (Kulczyński, 1887)**

***Tenuiphantes mengei* Levina & Mikhailov, 2004: 46.**

Material. 1♀ (ISEA), KBR, env. of Taimenye Lake, SE-slope, 49.817451N 85.800822E, 1670 m a.s.l., 08.VIII.2019, leg. LT.

Habitats. Herb meadows.

Range. Palaearctic.

***Tenuiphantes nigriventris* (L. Koch, 1879)**

***Tenuiphantes nigriventris* Levina & Mikhailov, 2004: 46.**

Material. 2♀ (ISEA), KBR, SE shore of Taimenye Lake, 49°48'08.2"N 85°48'00.5"E, 1551 m a.s.l., 07–13.VIII.2019, leg. LT; 1♀ (ISEA), KBR, env. of Taimenye Lake floodplain of Khariuzovka River, 49°48'53.6"N 85°47'42.0"E, 1652 m a.s.l., 11.VIII.2019, leg. LT; 1♂ & 4♀ (ISEA), KBR, upper reaches of Katun' River, Zaichikha River mouth, 49°37.138'N 85°43.064'E, 1302 m a.s.l., near Zaichikha Ranger Station, 16–26.VIII.2020, leg. LT; 1♂ & 2♀ (ISEA), KBR, Katun' River Valley, 260 m upstream of Zaichikha River mouth, 49.618615N 85.717350E, 20.VIII.2020, leg. LT; 1♂ (ISEA), KBR, same locality, upper reaches of Katun' River Valley, Zaichikha River

Valley, 1 km upstream of its mouth, 49.619488N 85.717588E, 20.VIII.2020, leg. LT.

Habitats. Blueberry-green moss spruce forests, dry riverbeds on small islands, among plant residues, *Larix-Picea* forests.

Range. Palaearctic.

Walckenaeria antica* (Wider, 1834)

Material. 1♀ (ISEA), KBR, upper reaches of Katun' River, Zaichikha River mouth, 49°37.138'N 85°43.064'E, 1302 m a.s.l., near Zaichikha Ranger Station, 15–18.VIII.2020, leg. LT.

Habitats. On village residential and outbuildings.

Range. Palaearctic.

***Walckenaeria karpinskii* (O. Pickard-Cambridge, 1871)**

***Walckenaeria karpinskii* Levina & Mikhailov, 2004: 47.**

Material. 1♀ (ISEA), KBR, upper reaches of Katun' River, 3 km NE of Zaichikha Ranger Station, 49°36'25.6"N 85°44'13.4"E, 16.VIII.2020, leg. LT.

Habitats. *Abies sibirica* green moss forests.

Range. Fennoscandian-Siberian-Nearctic.

***Zornella cultrigera* (L. Koch, 1879)**

***Zornella cultrigera* Levina & Mikhailov, 2004: 47.**

***Zornella cultrigera* Trilikauskas, 2019: 287.**

Material. 1♀ (ISEA), KBR, SE shore of Taimenye Lake, 49°48'08.2"N 85°48'00.5"E, 1551 m a.s.l., 07–13.VIII.2019, leg. LT; 9♂ & 9♀ (ISEA), KBR, upper reaches of Katun' River, Zaichikha River mouth, 49°37.138'N 85°43.064'E, 1302 m a.s.l., near Zaichikha Ranger Station, 15–26.VIII.2020, leg. LT; 1♀ (ISEA), KBR, upper reaches of Katun' River Valley, floodplain of Zaichikha River, 100–150 m upstream of its mouth, 15.VIII. 2020, leg. LT; 1♀ (ISEA), KBR, upper reaches of Katun' River, 3 km NE of Zaichikha Ranger Station, 49°36'25.6"N 85°44'13.4"E, 16.VIII.2020, leg.

LT; 1♀ (ISEA), KBR, upper reaches of Katun' River Valley, Zaichikha River Valley, 1 km upstream of its mouth, 49.619488N 85.717588E, 18.VIII.2020, leg. LT; 1♂ & 3♀ (ISEA), KBR, upper reaches of Katun' River Valley, downstream of Zaichikha River, 500 m E of its mouth, 19–26.VIII.2020, leg. LT.

Habitats. Blueberry-green moss and green moss spruce forests, *Abies sibirica* green moss forests, tall herb spruce forests.

Range. Holarctic.

Liocranidae (1 species)

Agroeca proxima (O. Pickard-Cambridge, 1871)*

Material. 5♂ & 1♀ (ISEA), KBR, upper reaches of Katun' River, Zaichikha River mouth, 49°37.138'N 85°43.064'E, 1302 m a.s.l., near Zaichikha Ranger Station, 15–26.VIII.2020, leg. LT.

Habitats. Spruce green moss forests.

Range. West Palaearctic.

Lycosidae (14 species)

Acantholycosa lignaria (Clerck, 1758)*

Material. 1♀ (ISEA), KBR, upper reaches of Katun' River, Zaichikha River mouth, 49°37.138'N 85°43.064'E, 1302 m a.s.l., near Zaichikha Ranger Station, 15–18.VIII.2020, leg. LT.

Habitats. Remnants of lumber near ranger station.

Range. Palaearctic.

Acantholycosa norvegica (Thorell, 1872)

Acantholycosa norvegica Trilikauskas, 2019: 287.

Material. 3♀ (ISEA), KBR, 4 km NE of Zaichikha Ranger Station, 49°36'25.6"N 85°44'13.4"E, 1511 m a.s.l., 16.VIII.2020, leg. LT.

Habitats. Screes.

Range. Palaearctic.

Acantholycosa zinchenko Marusik, Azarkina & Koponen, 2004**

Material. 2♀ (ISEA), KBR, 4 km NE of Zaichikha Ranger Station, 49°36'25.6"N 85°44'13.4"E, 1511 m a.s.l., 16.VIII.2020, leg. LT.

Habitats. Screes.

Comments. This is the first record for the fauna of Russia. Yuri Marusik with co-authors (Marusik *et al.*, 2004) listed this species for the territory of Russia, however, all type localities are actually from the Republic of Kazakhstan.

Range. South Siberian.

Alopecosa aculeata (Clerck, 1757)

Alopecosa aculeata Levina & Mikhailov, 2004: 47.

Alopecosa aculeata Trilikauskas, 2019: 287.

Material. 1♀ (ISEA), KBR, SE shore of Taimenye Lake, 49°48'08.2"N 85°48'00.5"E, 1551 m a.s.l., 07–13.VIII.2019, leg. LT; 1♀ (ISEA), KBR, bank of Taimenye Lake near Soloukha River mouth, 49°50.194'N 85°51.128'E, 1534 m a.s.l., 09.VIII.2019, leg. LT; 1♀ (ISEA), KBR, upper reaches of Katun' River, Zaichikha River mouth, 49°37.138'N 85°43.064'E, 1302 m a.s.l., near Zaichikha Ranger Station, 15–26.VIII.2020, leg. LT.

Habitats. Blueberry-green moss spruce forests, near village residential and outbuildings.

Range. Palaearctic.

Alopecosa pulverulenta (Clerck, 1757)

Alopecosa pulverulenta Trilikauskas, 2019: 288.

Material. 1♀ (ISEA), KBR, upper reaches of Katun' River, Zaichikha River mouth, 49°37.138'N 85°43.064'E, 1302 m a.s.l., near Zaichikha Ranger Station, 15–26.VIII.2020, leg. LT.

Habitats. Near village residential and outbuildings.

Range. Palaearctic.

Pardosa agrestis* (Westring, 1861)

Material. 1♀ (ISEA), KBR, E-slope of mountain near Taimenye Lake Ranger Station, 49.812513N 85.797308E, 10.VIII.2019, leg. LT.

Habitats. Edge of mixed forests.

Range. Palaearctic.

***Pardosa lasciva* L. Koch, 1879**

***Pardosa lasciva* Levina & Mikhailov, 2004: 48.**

***Pardosa lasciva* Trilikauskas, 2019: 288.**

Material. 8♀ (ISEA), KBR, SE shore of Taimenye Lake, 49°48'08.2"N 85°48'00.5"E, 1551 m a.s.l., 07–13.VIII.2019, leg. LT; 1♀ (ISEA), KBR, upper reaches of Katun' River Valley, downstream of Zaichikha River, 500 m E of its mouth, 15–26.VIII.2020, leg. LT.

Habitats. Blueberry-green moss and tall herb spruce forests.

Range. Palaearctic.

***Pardosa lugubris* (Walckenaer, 1802)**

***Pardosa lugubris* Levina & Mikhailov, 2004: 48.**

Material. 2♀ (ISEA), KBR, upper reaches of Katun' River, Zaichikha River mouth, 49°37.138'N 85°43.064'E, 1302 m a.s.l., near Zaichikha Ranger Station, 14–15.08.2020, leg. LT; 1♀ (ISEA), KBR, upper reaches of Katun' River Valley, floodplain of Zaichikha River, 100–150 m upstream of its mouth, 15.VIII.2020, leg. LT; 1♀ (ISEA), KBR, 3.5 km upstream of Zaichikha River mouth, 49.614980N 85.717212E, 16.VIII.2020, leg. LT.

Habitats. Sparse spruce forests, pebble riverbanks, herb meadows.

Range. Palaearctic.

***Pardosa oksalai* Marusik, Hippa & Koponen, 1996**

***Pardosa oksalai* Levina & Mikhailov, 2004: 48.**

***Pardosa oksalai* Trilikauskas, 2019: 288.**

Material. 1♀ (ISEA), KBR, upper reaches of Katun' River, Zaichikha River mouth, 49°37.138'N 85°43.064'E, 1302 m a.s.l., near Zaichikha Ranger Station, 19.VIII.2020, leg. LT.

Habitats. Edge of spruce forests.

Range. South Siberian.

Pardosa riparia* (C. L. Koch, 1847)

Material. 2♀ (ISEA), KBR, upper reaches of Katun' River, Zaichikha River Valley, 700 m E of its mouth, 17–18.VIII.2020, leg. LT; 1♀ (ISEA), KBR, floodplain of small river 260 m upstream of Zaichikha River, 20.VIII.2020, leg. LT.

Habitats. Herb meadows, pebble riverbanks.

Range. Palaearctic.

***Pardosa prativaga* (L. Koch, 1870)**

***Pardosa prativaga* Trilikauskas, 2019: 288.**

Material. 2♀ (ISEA), KBR, bank of Taimenye Lake near Soloukha River mouth, 49°50.194'N 85°51.128'E, 1534 m a.s.l., 09.VIII.2019, leg. LT; 1♀ (ISEA), KBR, upper reaches of Katun' River Valley, downstream of Zaichikha River, 500 m E of its mouth, 16.VIII.2020, leg. LT; 1♀ (ISEA), KBR, same locality, floodplain of small river 200 m upstream of Zaichikha River, 20.VIII.2020, leg. LT; 2♀ (ISEA), KBR, downstream of Zaichikha River, 1000 m E of its mouth, 21.VIII.2020, leg. LT.

Habitats. Herb and forb-cereal meadows.

Range. West Palaearctic.

Piratula hygrophila* (Thorell, 1872)

Material. 2♀ (ISEA), KBR, NE shore of Taimenye Lake, 49.811683N 85.799368E, 10.VIII.2019, leg. LT.

Habitats. Alluvion along lake shores.

Range. West Palaearctic.

***Trochosa terricola* Thorell, 1856**

***Trochosa terricola* Trilikauskas, 2019: 288.**

Material. 1♀ (ISEA), KBR, upper reaches of Katun' River, Zaichikha River mouth,

49°37.138'N 85°43.064'E, 1302 m a.s.l., near Zaichikha Ranger Station, 15–18.VIII.2020, leg. LT.

Habitats. Edge of spruce forests.

Range. Palaearctic.

Xerolycosa nemoralis (Westring, 1861)

Xerolycosa nemoralis Trilikauskas, 2019: 288.

Material. 1♂ (ISEA), KBR, E-slope of mountain near Taimenye Lake Ranger Station, 49.812513N 85.797308E, 10.VIII.2019, leg. LT.

Habitats. Edge of mixed forests.

Range. Palaearctic.

Miturgidae (1 species)

Zora sp. *

Material. 1♂ & 1♀ (ISEA), KBR, downstream of Zaichikha River, 200–1000 m E of its mouth, 15 & 20.VIII.2020, leg. LT.

Habitats. Herb meadows.

Range. Unknown.

Remarks. Undescribed species probably.

Oxyopidae (1 species)

Oxyopes ramosus (Martini & Goeze, 1778)*

Material. 1♀ (ISEA), KBR, downstream of Zaichikha River, 1000 m E of its mouth, 21.VIII.2020, leg. LT.

Habitats. Forb-cereal meadows.

Range. Palaearctic.

Philodromidae (1 species)

Tibellus oblongus (Walckenaer, 1802)*

Material. 4♀ (ISEA), KBR, downstream of Zaichikha River, 500–1000 m E of its mouth, 16-17.21.VIII.2020, leg. LT.

Habitats. Herb and forb-cereal meadows.

Range. Holarctic.

Salticidae (3 species)

Attulus avocator (O. Pckard-Cambridge, 1885)

Attulus avocator Trilikauskas, 2019: 288.

Material. 2♂ (ISEA), KBR, upper reaches of Katun' River, downstream of Zaichikha River, 1.5 km upstream of its mouth, right bank, 18.VIII.2020, leg. LT.

Habitats. Rocks and screes.

Range. East Palaearctic.

Evarcha falcata (Clerck, 1757)

Evarcha falcata Levina & Mikhailov, 2004: 49.

Evarcha falcata Trilikauskas, 2019: 288.

Material. 1♂ (ISEA), KBR, env. of Taimenye Lake, SE-slope, 49.817451N 85.800822E, 1670 m a.s.l., 08.VIII.2019, leg. LT; 3♂ & 1♀ (ISEA), KBR, E-slope of mountain near Taimenye Lake Ranger Station, 10.VIII.2019, leg. LT; 1♀ (ISEA), KBR, env. Taimenye Lake, floodplain of Khariuzovka River, 49°48'53.6"N 85°47'42.0"E, 1652 m a.s.l., 11.VIII.2019, leg. LT; 1♂ (ISEA), KBR, upper reaches of Katun' River, 3 km NE of Zaichikha Ranger Station, 49°36'25.6"N 85°44'13.4"E, 16.VIII.2020, leg. LT.

Habitats. Herb meadows, edge of a mixed forests, dry riverbeds on small islands, among plant residues, *Abies sibirica* green moss forests.

Range. West Palaearctic.

Heliophanus auratus C. L. Koch, 1835

Heliophanus auratus Trilikauskas, 2019: 288.

Material. 1♂ (ISEA), KBR, upper reaches of Katun' River, downstream of Zaichikha River, 1.5 km upstream of its mouth, right bank, 18.VIII.2020, leg. LT.

Habitats. Rocks and screes.

Range. West Palaearctic.

Sparassidae (1 species)

Micrommata virescens (Clerck, 1757)

Micrommata virescens Trilikauskas, 2019: 288.

Material. 1 juvenile (PCLT), KBR, downstream of Zaichikha River, 500 m E of its mouth, 17.VIII.2020, leg. LT.

Habitats. Herb meadows.

Range. Palaearctic.

Tetragnathidae (1 species)

Tetragnatha pinicola L. Koch, 1870

Material. *Tetragnatha pinicola* Levina & Mikhailov, 2004: 50.

Material. 1 ♂ (ISEA), KBR, SE shore of Taimenye Lake, 49°48'08.2"N 85°48'00.5"E, 1551 m a.s.l., 07.VIII.2019, leg. LT; 1 ♂ (ISEA), KBR, E-slope of mountain near Taimenye Lake Ranger Station, 49.812513N 85.797308E, 10.VIII.2019, leg. LT; 3 ♀ (ISEA), KBR, env. of Taimenye Lake, floodplain of Khariuzovka River, 49°48'53.6"N 85°47'42.0"E, 1652 m a.s.l., 11.VIII.2019, leg. LT.

Habitats. Thickets of sedges on shore of lake in spruce forests, edge of mixed forests, grass in floodplains.

Range. Palaearctic.

Theridiidae (2 species)

Phylloneta impressa (L. Koch, 1881)*

Material. 1 ♀ (ISEA), KBR, upper reaches of Katun' River, Zaichikha River Valley, 49°36.872'N 85°43.485'E, 1334 m a.s.l., 14-15.VIII.2020, leg. LT; 1 ♀ (ISEA), KBR, downstream of Zaichikha River, 500–1000 m E of its mouth, 21.VIII.2020, leg. LT.

Habitats. Sparse spruce underwoods on grass, forb-cereal meadows.

Range. Palaearctic.

Phylloneta sisypbia (Clerck, 1757)*

Material. 1 ♀ (ISEA), KBR, upper reaches of Katun' River, downstream of Zaichikha River, 1.5 km upstream of its mouth, right bank, 18.VIII.2020, leg. LT.

Habitats. Rocks and screes.

Range. West Palaearctic.

Thomisidae (3 species)

Misumena vatia (Clerck, 1757)

Misumena vatia Levina & Mikhailov, 2004: 51.

Material. 2 ♀ (ISEA), KBR, downstream of Zaichikha River, 500–1000 m E of its mouth, 21.VIII.2020, leg. LT.

Habitats. Forb-cereal meadows.

Range. Holarctic.

Runcinia grammica (C. L. Koch, 1837)*

Material. 1 ♀ (ISEA), KBR, bank of Taimenye Lake near Soloukha River mouth, 49°50.194'N 85°51.128'E, 1534 m a.s.l., 09.VIII.2019, leg. LT.

Habitats. Herb meadows.

Range. Palaearctic.

Xysticus lustuosus (Blackwall, 1836)

Xysticus lustuosus Trilikauskas, 2019: 288.

Material. 1 ♀ (ISEA), KBR, downstream of Zaichikha River, 500 m E of its mouth, 17.VIII.2020, leg. LT.

Habitats. Herb meadow.

Range. Holarctic.

Titanoecidae (1 species)

Titanoeca sp.*

Material. 2 subadult ♀ (PCLT), KBR, Katun' River Valley, 3.5 km upstream of Zaichikha River mouth, 49.614980N, 85.717212E, 24.VIII.2020, leg. LT.

Habitats. Pebble riverbanks.

Range. Unknown.

RESULTS

Based on the result of the present study, 35 spider species have been added to the list for the Katunskiy State Nature Biosphere Reserve, and hence the spider fauna of the reserve currently accounts for at least 164 species. *Acantholycosa zinchenkoi* is recorded for

the fauna of Russia for the first time. A brief zoogeographical analysis illustrates that over 60% of the reserve's araneofauna are represented by widespread species: viz., Holarctic, Palaearctic and Palaearctic-West Nearctic (47 species in total). Ranges of only 12 species are confined to Siberia or the East Palearctic region (16%). A slightly larger share (19%) belongs to West Palearctic and Euro-Siberian species.

Results of the present study are generally in agreement with those as stated by Marusik *et al.* (1996) and Tanasevitch (2013), that the spider fauna of the Altai Mts is of a transitional character between the European and Siberian faunas. It is dominated by widespread species, while the proportion of purely Siberian elements being low. Moreover, many typically Siberian and South Siberian species, e.g., *Alopecosa sibirica* (Kulczyński, 1908), *Bathypantes humilis* (L. Koch, 1879), *Haplodrassus belgeri* Ovtsharenko & Marusik, 1988, *Tanasevitchia uralensis* (Tanasevitch, 1983), *Styloctetor sphagnicola* Eskov & Marusik, 1992, etc., are absent.

ACKNOWLEDGEMENTS

The authors are grateful to Alexander Zateev, Tatyana Yashina, and Sergey Bebekin (all - Katunskiy State Nature Biosphere Reserve) for their support and help in our research in the reserve. We are deeply grateful to Kirill Mikhailov (ZMMU) for the opportunity to work on the spider collections under his care. Thanks also go to Galina Azarkina (ISEA) for taking photos of *Oreonetides sajanensis*, as well as to Dmitri Logunov (Manchester, UK) who kindly checked the English of an advanced draft.

This work was partly supported by Federal Fundamental Scientific Research Program, projects 0247-2021-0002.

REFERENCES

- Eskov K.Yu. 1991. On the taxonomy and zoogeography of the spider genera *Maro* and *Oreonetides* (Aranei, Linyphiidae). *Zoologicheskii zhurnal*, 70(4): 45–54 [in Russian, English abstract].
- Helsdingen P.J. van 1965. Sexual behaviour of *Leptyphantus leprosus* (Ohlert) (Araneida, Linyphiidae), with notes on the function of the genital organs. *Zoologische Mededelingen*, 41: 15–42.
- Holm Å. 1979. A taxonomic study of European and East African species of the genera *Pelecopsis* and *Trichopterna* (Araneae, Linyphiidae), with descriptions of a new genus and two new species of *Pelecopsis* from Kenya. *Zoologica Scripta*, 8: 255–278.
- Kulczyński W. 1898. Symbola ad faunam araneorum Austriae inferioris cognoscendam. *Rozprawy i Sprawozdania z Posiedzeń Wydziału Matematyczno-Przyrodniczego Akademji Umiejętności, Kraków*, 36: 1–114. [in Latin].
- Levina N. V., Mikhailov K. G. 2004. Fauna paukov (Aranei) Gornogo Altaya [Spider (Aranei) Fauna of Mountainous Altai]. *Byulleten' Moskovskogo obshchestva ispytatelei prirody. Otdel biologicheskii*, 109(3): 38–52. [in Russian, English summary].
- Logunov D. V., Marusik Yu. M., Koponen S. 1998. A check-list of the spiders in Tuva, South Siberia with analysis of their habitat distribution. *Berichte des Naturwissenschaftlich-Medizinischen Vereins in Innsbruck*, 85: 125–159.
- Marusik Yu. M., Azarkina G. N., Koponen S. 2004. A survey of East Palearctic Lycosidae (Aranei). II. Genus *Acantholycosa* F. Dahl, 1908 and related new genera. *Arthropoda Selecta*, 12(2): 101–148.
- Marusik Yu. M., Fomichev A. A. 2010. A new species of *Parasyrisca* Schenkel, 1963 (Araneae, Gnaphosidae) from the Altai. *Zootaxa*, 2526: 65–68.

Received: 02.09.2021

Accepted: 25.10.2021.

- Marusik Yu. M., Hippa H., Koponen S. 1996. Spider (Araneae) from the Altai area, Southern Siberia. *Acta Zoologica Fennica*, 201: 11–45.
- Marusik Yu. M., Logunov D. V., Koponen S. 2000. Spiders of Tuva, South Siberia. Magadan: IBPN FEB RAS. Pp. 252.
- Merrett P. 1963. The palpus of male spiders of the family Linyphiidae. *Proceedings of the Zoological Society of London*, 140: 347–467.
- Saaristo M. I. 1971. Revision of the genus *Maro* O.P.-Cambridge (Araneae, Linyphiidae). *Annales Zoologici Fennici*, 8: 463–482.
- Saaristo M. I. 1973 Taxonomical analysis of the type-species of *Agyneta*, *Anomalaria*, *Meioneta*, *Aprolagus*, and *Syedrula* (Araneae, Linyphiidae). *Annales Zoologici Fennici*, 10: 451–466.
- Shorthouse D. P. 2010. SimpleMappr, an online tool to produce publication-quality point maps. available from: <http://www.simplemappr.net> (accessed 06 August 2021)
- Tanasevitch A. V. 2013. The linyphiid spiders of the Altai, southern Siberia (Aranei: Linyphiidae). *Arthropoda selecta*, 22(3): 267–306.
- Tanasevitch A. V. 2014. Two new *Agyneta* Hull, 1911 from the Asian part of Russia (Aranei: Linyphiidae). *Arthropoda Selecta*, 23(1): 77–80.
- Trilikauskas L. A. 2019. On the spider fauna (Arachnida: Aranei) of the Katunskiy Nature Biosphere State Reserve in South Siberia, Russia. *Eurasian Entomological journal*, 18(4): 285–289.
- World Spider Catalog (2021). World Spider Catalog. Version 22.5. Natural History Museum Bern, online at <http://wsc.nmbe.ch> [accessed 22 July 2021], doi: 10.24436/2.