

A NEW SYNONYM OF *PACHYRHYNCHUS SPECIOSUS* WATERHOUSE, 1841 (COLEOPTERA: CURCULIONIDAE) FROM THE PHILIPPINES

Anita Rukmane-Bārbale

Rukmane-Bārbale A. 2020. A new synonym of *Pachyrhynchus speciosus* Waterhouse, 1841 (Coleoptera: Curculionidae) from the Philippines. *Acta Biol. Univ. Daugavp.*, 20 (1): 35 – 38.

The following new synonymy is proposed: *Pachyrhynchus speciosus* Waterhouse, 1841 = *P. absurdus* Schultze, 1919, syn. nov. Photographs of type specimens of *P. absurdus* are presented. The lectotype for *P. absurdus* Schultze, 1919 is designated.

Key words: Coleoptera, Pachyrhynchini, *Pachyrhynchus*, taxonomy, new synonymy, lectotype, Philippines.

Anita Rukmane-Bārbale. *Daugavpils University, Institute of Life Sciences and Technology, Coleopterological Research Center, Vienības Str. 13, Daugavpils, LV – 5401. Latvia; e-mail: anitakraslava@inbox.lv*

INTRODUCTION

The genus *Pachyrhynchus* Germar, 1824 belongs to the tribe Pachyrhynchini Schoenherr, 1826 of Entiminae Schoenherr, 1826. There are as much as 157 valid species in this genus so far (Yoshitake 2012, Rukmane & Barševskis 2016, Bollino et al. 2017, Rukmane 2017). All represented species are known from the Oriental Region, with 144 species distributed on islands of Philippine archipelago, seven species endemic of Taiwan, one of Ishigaki and five of Indonesian islands.

During the observation of type material from SMTD of both *P. speciosus* and *P. absurdus*, and additional study on both taxa available in DUBC and NHML, I concluded, that holotype of *P. absurdus* completely correspond features of *P. speciosus*. Consequently, main aim of this short contribution is to clarify taxonomic status of both taxa, and introduce new synonymy.

MATERIAL AND METHODS

The study was based on specimens deposited at the following collections:

DUBC – Daugavpils University Beetle Collection, Daugavpils, Latvia

BMNH – The Natural History Museum, London, UK (M. Barclay)

SMTD – Senckenberg Natural History Collections, Dresden, Germany (O. Jäger)

The laboratory research follows Rukmane (2017). Label data are cited *verbatim*. In the text the following symbols and abbreviations were used:

/ = different lines

// = different labels

Number of specimens examined is written in brackets after citation of the label.

RESULTS

***Pachyrhynchus speciosus* Waterhouse, 1841** (Fig. 1)

Pachyrhynchus speciosus Waterhouse, 1841: 314
Pachyrhynchus absurdus Schultze, 1919: 550
syn. nov.

Type material examined: Holotype of *Pachyrhynchus speciosus* Waterhouse, 1841, female: Type (round white label, circumscribed by red circle) // 75. / 36. (round white label) // *Pachyrhynchus / speciosus* W. (white rectangular label) (BMNH).

Lectotype of *Pachyrhynchus absurdus* Schultze, 1919, male: Bucas Island / G. Boettcher (white rectangular label, printed) // *Pachyrhynchus / absurdus* ♂ / Det. W. Schultze. *Schultze* / Type (white rectangular label) // Coll. W. Schultze / Ankauf 1942 (yellow rectangular label) // Staatl. Museum für / Tierkunde Dresden (white rectangular card, printed) // HOLOTYPUS (red rectangular card, printed); left antenna missing (SMTD) (Fig. 2)

Diagnosis. Body coppery red, old specimens almost black. Scally markings pale green, with metallic luster. Impression on head between eyes broad and deep, continuous with excavation on base of rostrum. Head with three longitudinal markings; one median, and one under each eye. Thorax indistinctly punctured, with three elongated longitudinal scally markings, one oval on each side and one dorsal arrow-shaped marking, slightly longer than broad. Elytra short ovate, striate-punctate, at the basal portion of each elytron with transverse area, enclosed by a narrow band of scales, and extending from outer margin nearly to the suture; apical portion with curved area, with two narrow transverse bands, that become confluent near outer margin of each elytron and run backwards to the apical curved marks; in some cases two dorsal bands are combined at suture of elytra. Line of scales on prosternum nearly encircles base of anterior legs. Femora with scally markings on subapical part, more or less interrupted on the upper surface of each femur. Habitus of male is illustrated in (Fig. 1).

Remarks. *Pachyrhynchus speciosus* Waterhouse, 1841

Waterhouse (1841) described this species from one female specimen, without exact location of the species. Never less, together with Type specimen available in BMNH, collection include number of specimens that morphologically correspond type, collected from Mindanao Island. Schultze (1919) described and figured *Pachyrhynchus absurdus* based on one male and one female specimen. According to the original description, the type specimens were deposited in Schultze private collection (Schultze, 1919), but actually the types are now deposited in SMTD. The type series contain two males and one female. Later, the same author (Schultze 1922) added note,



Fig.1. Appearance of *P. speciosus* Waterhouse, 1841, male.



Fig. 2. Lectotype of *P. absurdus* Schultze, 1919.

that male of *P. absurdus* is a form of *P. speciosus* Waterh. and the true *P. absurdus* is a female from the original description. Schultze, consequently, considered the male of *P. absurdus* as a synonym of *P. speciosus* (but the formal synonymization was not provided by him), and the female as *P. absurdus* (Schultze, 1923). Despite this, the male of *P. absurdus* was never described, despite the fact, that one male corresponding features of the female from this type serie.

Type material, considered as *P. absurdus*: Bucas Island / G. Boettcher (white rectangular label, printed) // Coll. W. Schultze / Ankauf 1942 (yellow rectangular label) // Staatl. Museum fur

/ Tierkunde Dresden (white rectangular card, printed) // *Pachyrhynchus / absurdus* ♂ / Det. W. Schultze. Schultze / Type (white rectangular label) (1♂, 1♀) (Fig. 3).

All three specimens has type labels, and one male have additional red label "HOLOTYPUS", which apparently was pinned after the original description. According to regalement of International Commission on Zoological Nomenclature, holotype is a single specimen expressly designated as the name-bearing "type" by the original author of the species. We can't ignore the fact, that there is always a possibility, that this additional label was added to type

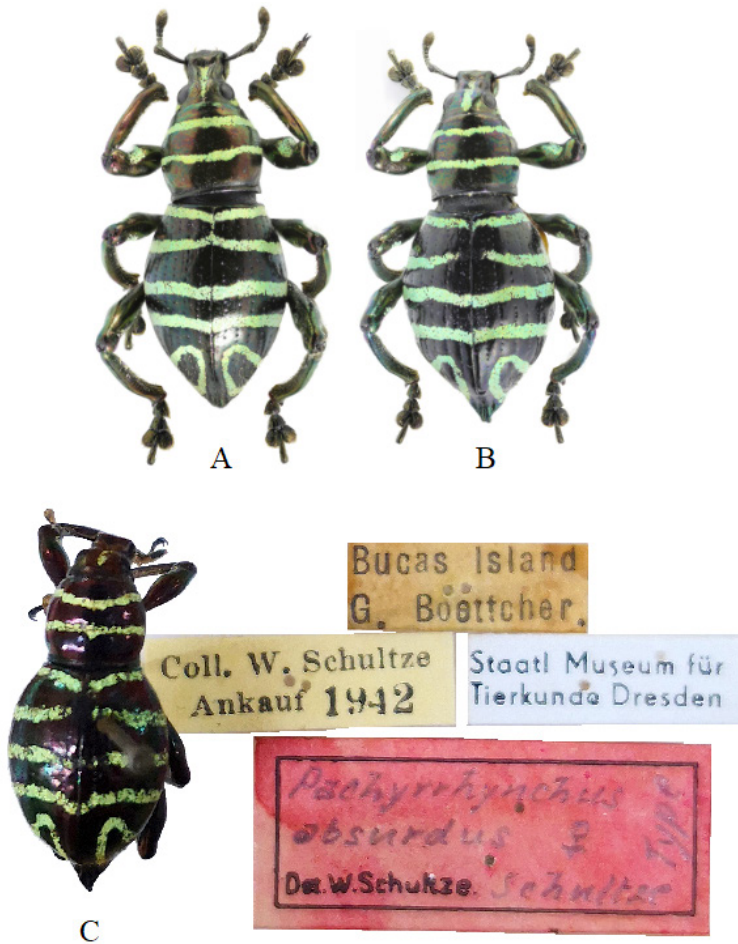


Fig. 3. A, B – Male (A) and female (B) of *P. orientalis* Rukmane, 2017; C – Type of *P. absurdus* Schultze, 1919, female.

specimen after the original description, with my own considerations, it was done by Schultze during his later revision of the genus. As we can't prove this fact, there is a need in establishing a new lectotype, as the single type specimen for species originally described from a set of syntypes. According to the gender preference and considering the presence of "HOLOTYPE" label, I considered this specimen as a lectotype in order to fix the identity of the name. An additional red rectangular label "LECTOTYPE" was added by me on the same pin with specimen. A comparison of *P. speciosus* of several museums (DUBC, SMTD, BMNH) from Mindanao, Samar, Siargao and Bucas islands with the lectotype of *P. absurdus* revealed that they are morphologically conspecific. Thus, I synonymized *P. absurdus* with *P. speciosus*. Two other specimens, based on shapes of the rostrum with similar impression, elytra with markedly elongate apex in female, and characteristic scally markings of the body, are conspecific with *P. orientalis* Rukmane, 2017. This species has extending distribution range from Mindanao to Bucas islands (Rukmane 2017).

ACKNOWLEDGEMENTS

I wish to express my gratitude to Alexey Shavrin and Alexander Anichtchenko (Daugavpils, Latvia) for their valuable comments. Olaf Jager and Max Barclay for a possibility to work in SMTD and BMNH.

REFERENCES

- Bollino M., Sandel F., Rukmane A. 2017. New species of the genus *Pachyrhynchus* Germar, 1823 (Coleoptera: Curculionidae) from Mindanao, Philippines. *Baltic J. of Coleopterol.*, 17(2): 189 – 204.
- Rukmane A. 2017. New species of the genus *Pachyrhynchus* Germar (Coleoptera, Curculionidae, Entiminae) from the greater Mindanao pleistocene aggregate island complex (Philippines). *Acta Biol. Univ. Daugavp.*, 17(1): 85 – 95.
- Rukmane A., Barševskis A. 2016. Nine new species of the genus *Pachyrhynchus* Germar, 1824 (Coleoptera: Curculionidae) from the Philippines. *Baltic J. Of Coleopterol.*, 16(1): 77 – 96.
- Schultze W. 1919. Seventh contribution to the coleoptera fauna of the Philippines. *Philipp. J. Sci.*: 545 – 561.
- Schultze W. 1922. Neunter Beitrag zur Coleopteren-Fauna der Philippinen. *Deutsch. Ent. Zeitschr.*: 36 – 45.
- Schultze W. 1923. A monograph of the Pachyrhynchid group of the Brachyderinae, Curculionidae: Part I. *Philipp. J. Sci.*: 609 – 673.
- Waterhouse G. R. 1841. XLV. Descriptions of the Species of the Curculionideous Genus *Pachyrhynchus*, Sch., collected by H. Cuming, Esq., in the Philippine Islands. *Mr. G. R. Waterhouse's Descriptions*: 310 – 327.
- Yoshitake H. 2012. Nine new species of the genus *Pachyrhynchus* Germar (Coleoptera: Curculionidae) from the Philippines. *Esakia*, 52: 17 – 34.

Received: 20.04.2020.

Accepted: 15.07.2020.